



# Ontario Professional Planners Institute

## Ontario Professional Planners Institute

### Audited Financial Statements

#### FOR THE YEAR ENDED DECEMBER 31, 2015

During the course of the audit, Kriens~LaRose LLP, Chartered Accountants found that the financial statements present fairly, in all material respects, the financial position of OPPI as at December 31, 2015, and its financial performance and its cash flows for the year then ended in accordance with Canadian generally accepted accounting principles. Council's actions in 2015 were guided by its Business Plan for the year, which is based on OPPI's Strategic Plan.

Summary of results by Functional Area in relation to the approved budget:

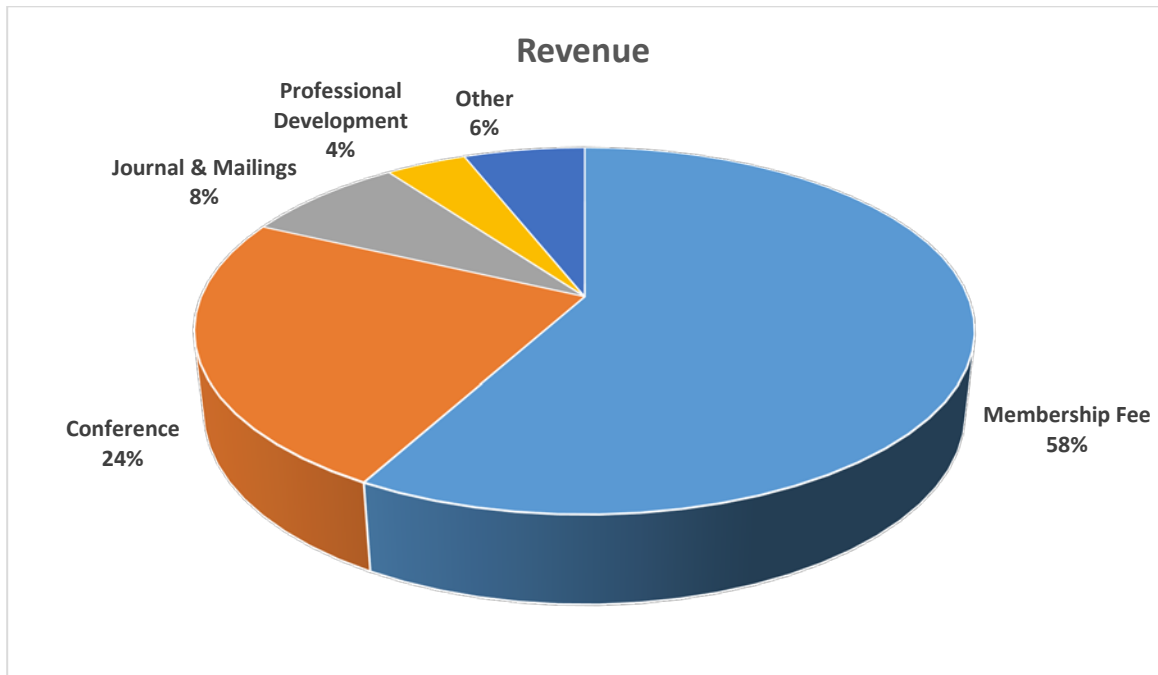
<b>Budget Area</b>	<b>Change</b>	<b>Amount</b>
Operations	Surplus	\$117,808
Capital Fund	Surplus	\$10,000
Scholarship Fund	Surplus	\$2,434
Strategic Fund	Deficit	(\$48,044)
Discipline Fund	Surplus	\$70,240
<b>Overall</b>	<b>Surplus</b>	<b>\$152,438</b>

ONTARIO PROFESSIONAL PLANNERS INSTITUTE

**SUMMARIZED FINANCIAL INFORMATION**  
FOR THE YEAR ENDED DECEMBER 31, 2015

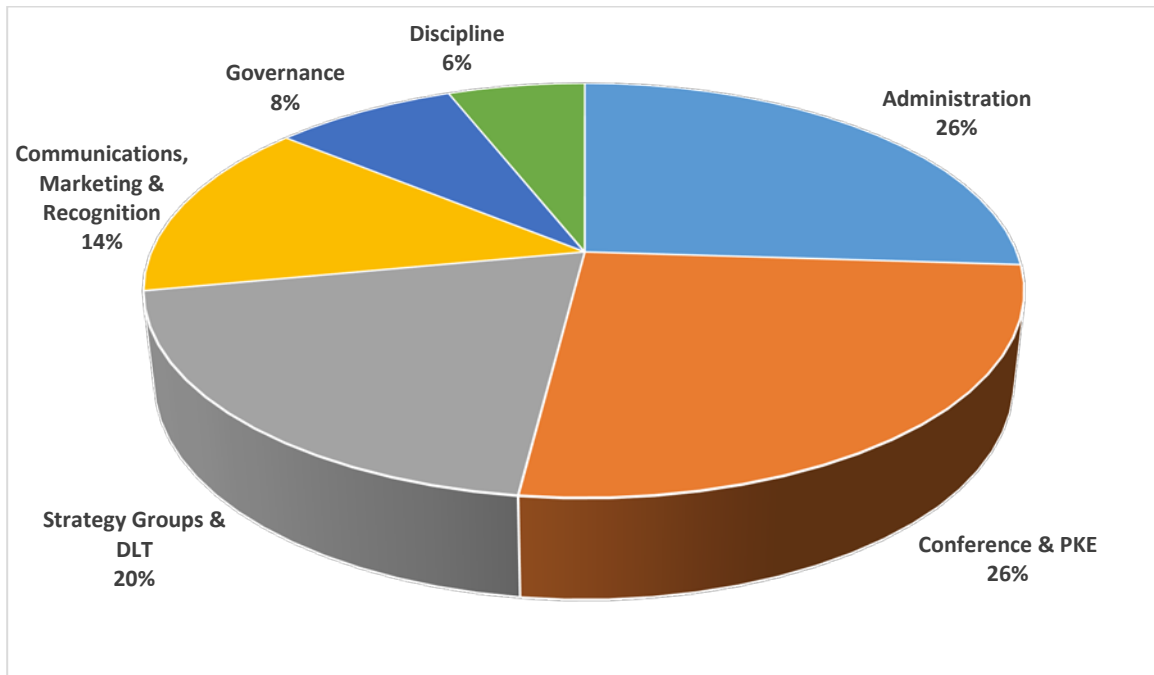
	2015	2014
	\$	\$
<b>CURRENT ASSETS</b>	2,500,492	2,228,316
<b>EQUIPMENT</b>	328,331	389,796
	2,828,823	2,618,112
<b>CURRENT LIABILITIES</b>	1,314,811	1,256,538
<b>NET ASSETS</b>		
<b>SCHOLARSHIP FUND</b>	103,837	101,403
<b>UNRESTRICTED NET ASSETS</b>	575,745	396,472
<b>INVESTED IN EQUIPMENT</b>	328,331	389,796
<b>CAPITAL RESERVE FUND</b>	134,979	124,979
<b>STRATEGIC FUND</b>	270,880	318,924
<b>DISCIPLINE FUND</b>	100,240	30,000
	2,828,823	2,618,112
<b>REVENUES</b>		
Membership fees	1,402,630	1,280,405
Conference	586,354	-
Journal and mailings	190,261	200,178
Other fees	109,163	72,357
Professional development	96,315	132,612
Districts	44,234	46,304
Symposium	-	340,770
	2,428,957	2,072,626
<b>EXPENSES</b>		
<b>Operations</b>		
Conference	519,404	-
Strategy groups and district leadership team	501,105	388,006
Office	305,841	308,819
Communications, marketing & recognition	299,899	226,049
General administration	264,648	226,172
Governance, Executive & Nominating	172,417	163,265
Planning knowledge exchange	75,017	84,089
Professional standards & registration	55,004	34,331
Other	50,870	44,033
Discipline	32,314	60,960
Symposium	-	324,009
	2,276,519	1,859,733
<b>EXCESS OF REVENUES OVER EXPENSES FOR THE YEAR</b>	152,438	212,893

## 2015 Revenue



Membership Fee	\$ 1,402,630
Conference	\$ 586,854
Journal & Mailings	\$ 190,261
Professional Development	\$ 96,315
Other	\$ 152,897
<b>Total Revenue</b>	<b>\$ 2,428,957</b>

## 2015 Expense



Administration	\$ 596,250
Conference & Planning Knowledge Exchange	\$ 594,421
Strategy Groups & District Leadership Teams	\$ 461,985
Communications, Marketing & Recognition	\$ 325,008
Governance & Nominating	\$ 172,417
Discipline, Professional Standards & Government Relations	\$ 126,438
<b>Total Expense</b>	<b>\$ 2,276,519</b>