

**Audited Financial Statements**

**FOR THE YEAR ENDED DECEMBER 31, 2019**

During the course of the audit, Kriens~LaRose LLP, Chartered Accountants found that the financial statements present fairly, in all material respects, the financial position of OPPI as at December 31, 2019, and its financial performance and its cash flows for the year then ended in accordance with Canadian generally accepted accounting principles. Council's actions in 2019 were guided by its Business Plan for the year, which is based on OPPI's Strategic Plan.

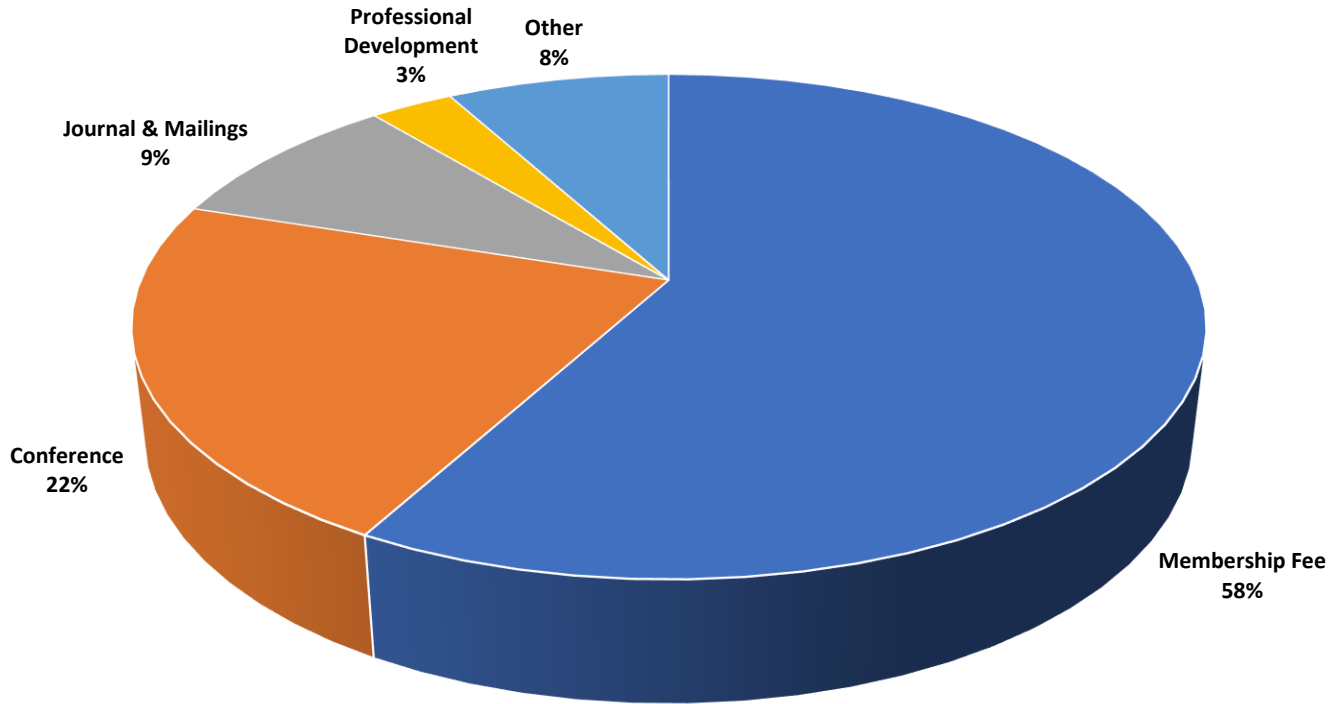
Summary of results by Functional Area in relation to the approved budget:

<b>Budget Area</b>	<b>Change</b>	<b>Amount</b>
Operations	Surplus	\$52,080
Capital Fund	Surplus	\$14,200
Scholarship Fund	Surplus	\$711
Strategic Fund	Surplus	\$224,750
Discipline Fund	Surplus	\$4,120
<b>Overall</b>	<b>Surplus</b>	<b>\$295,861</b>

ONTARIO PROFESSIONAL PLANNERS INSTITUTE  
**SUMMARIZED FINANCIAL INFORMATION**  
 FOR THE YEAR ENDED DECEMBER 31, 2019

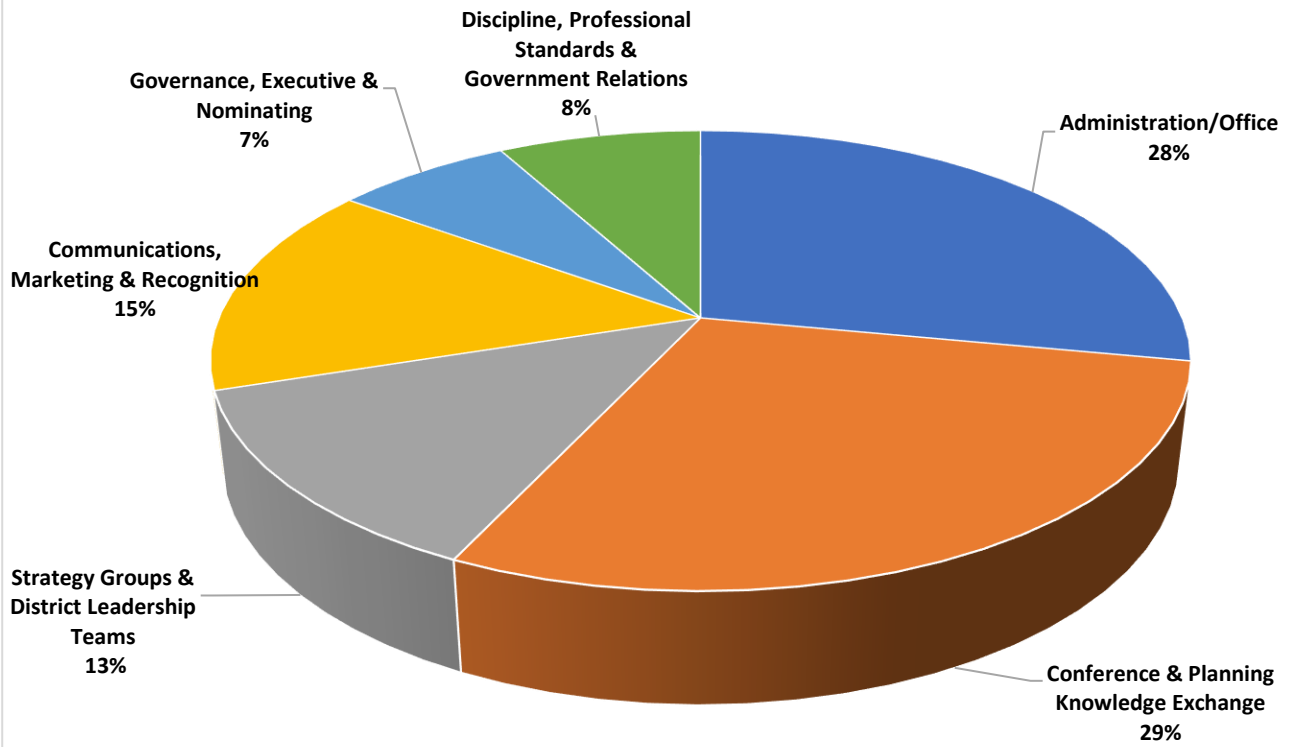
	2019	2018
	\$	\$
<b>CURRENT ASSETS</b>	3,805,584	3,490,513
<b>EQUIPMENT</b>	243,951	202,924
	4,049,535	3,693,437
<b>CURRENT LIABILITIES</b>	1,338,897	1,278,660
<b>NET ASSETS</b>		
<b>SCHOLARSHIP FUND</b>	206,714	206,003
<b>UNRESTRICTED NET ASSETS</b>	1,494,295	1,239,291
<b>INVESTED IN EQUIPMENT</b>	-	202,924
<b>CAPITAL RESERVE FUND</b>	241,226	227,026
<b>STRATEGIC FUND</b>	541,579	316,829
<b>DISCIPLINE FUND</b>	226,824	222,704
	4,049,535	3,693,437
<b>REVENUES</b>		
Membership fees	1,781,305	1,682,145
Magazine advertising and job postings	266,525	307,055
Conference/Symposium	668,445	283,750
Other fees	254,512	245,260
Professional development	105,789	63,525
Districts	19,589	28,736
	3,096,165	2,610,471
<b>EXPENSES</b>		
<b>Operations</b>		
General administration	462,787	448,146
Strategy groups and district leadership team	525,475	400,796
Office	323,403	311,391
Communications, marketing & recognition	341,307	310,316
Conference/Symposium	666,089	229,569
Governance, Executive & Nominating	185,831	177,904
Planning knowledge exchange	90,541	85,242
Professional standards & registration	63,669	68,418
Discipline	33,646	39,525
Other	107,556	17,500
	2,800,304	2,088,807
<b>EXCESS OF REVENUES OVER EXPENSES FOR THE YEAR</b>	295,861	521,664

## 2019 Revenue



Membership Fee	\$1,781,305
Conference	\$668,445
Journal & Mailings	\$266,165
Professional Development	\$105,789
Other	\$274,461
<b>Total Revenue</b>	<b>\$3,096,165</b>

## 2019 Expense



Administration/Office	\$786,190
Conference & Planning Knowledge Exchange	\$798,582
Strategy Groups & District Leadership Teams	\$372,216
Communications, Marketing & Recognition	\$407,080
Governance, Executive & Nominating	\$185,829
Discipline, Professional Standards & Government Relations	\$250,407
<b>Total Expense</b>	<b>\$2,800,304</b>